



1200W | 30L
VOC1230PF



ORIGINAL INSTRUCTIONS



IPX4






TABLE OF CONTENTS

SECTION	PAGE
Symbols.....	2
Safety Information	3
Unpacking and Checking Carton Contents	5
Assembly	7
Operation.....	8
Maintenance.....	10
Troubleshooting.....	11
Technical Data	12
Recycling and Disposal	12
Exploded View.....	13
Parts List.....	14

Thank you for purchasing this Vacmaster® wet and dry vacuum cleaner. Feel confident that with Vacmaster® you are obtaining a high-quality product that is engineered for optimal performance. This vacuum cleaner is suitable for use with both liquids and dry materials.

FOR YOUR SAFETY: CAREFULLY READ AND UNDERSTAND ALL INSTRUCTIONS.

SYMBOLS

	Caution.
	Read instruction manual. Failure to follow the warnings and instructions may result in electric shock, fire and/or serious injury.
	Appliance in which protection against electric shock does not rely on basic insulation only but in which additional safety precautions are provided, such as double insulation or reinforced insulation, there being no provision for protective earthing or reliance upon installation conditions.

SAFETY INFORMATION

READ AND UNDERSTAND ALL INSTRUCTIONS BEFORE USING THIS VACUUM CLEANER.

When using the equipment, a few safety precautions must be observed to avoid injuries and damage. Please read the complete operating manual with due care. Keep this manual in a safe place so that the information is always available. If you give the equipment to any other person, give them these operating instructions as well. We cannot accept any liability for damage or accidents which arise due to a failure to follow these instructions and the safety information.

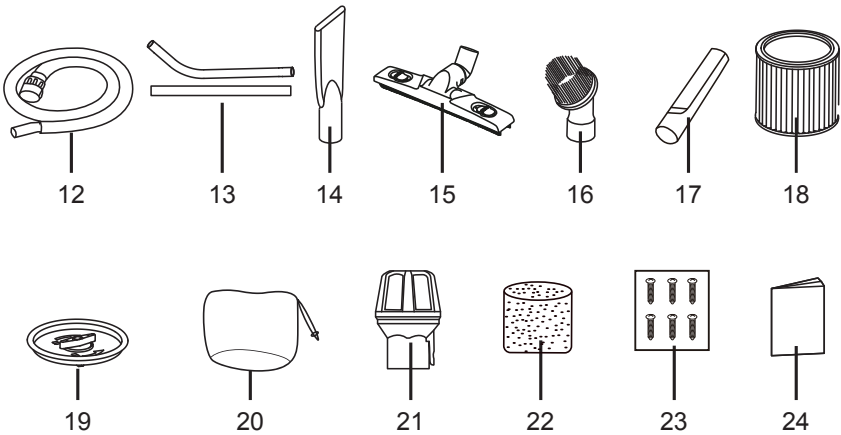
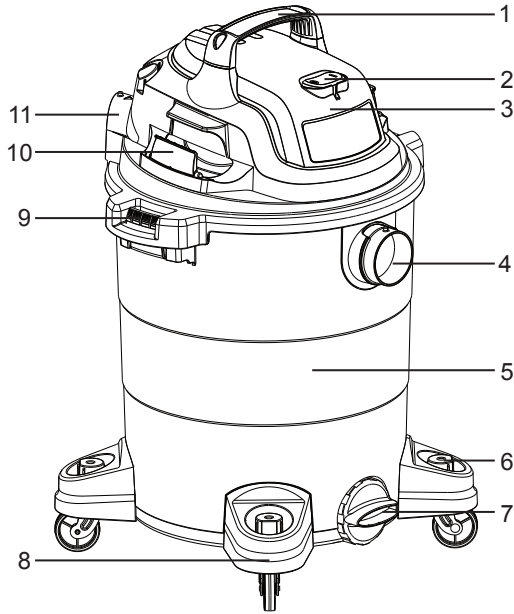
- Never leave the appliance switched on unattended, if you leave the work area, switch the appliance off or unplug it from the power supply.
- Do not vacuum or use this wet and dry vacuum cleaner near flammable liquids, gases or explosive vapours like gasoline or other fuels, lighter fluids, cleaners, oil-based paints, natural gas, hydrogen, or explosive dusts like coal dust, magnesium dust, grain dust or gun powder. Sparks inside the motor can ignite flammable vapours or dust.
- This vacuum cleaner is not suitable for the vacuuming of asbestos or asbestos dust.
- Do not vacuum anything that is burning or smoking, such as cigarettes, matches, or hot ashes.
- Ensure the hose and connections are always pointed away from the users face, hair, ears and eyes during operation and never direct the nozzle towards persons or animals.
- Clear the working area of any items or precessions that you do not wish to be vacuumed before operation.
- Keep cord away from heated surfaces.
- Do not expose to rain. Store indoors.
- Do not unplug by pulling on the cord. To unplug, grasp the plug, not the cord.
- Do not use with damaged cord, plug or other parts.
- Do not pull or carry by cord, use cord as handle, close a door on cord, or pull cord around sharp edges or corners.
- Do not handle the plug or vacuum cleaner with wet hands.

- To reduce the risk of health hazards from vapours or dusts, do not vacuum toxic materials.
- Do not use or store near hazardous materials.
- Do not use this vacuum cleaner with a torn filter or without the filter installed.
- Do not allow to be used as a toy. Close attention is necessary when used by or near children.
- To reduce the risk of injury from accidental starting, unplug power cord before changing or cleaning filter.
- Unplug from power supply when not in use and before carrying out maintenance.
- Do not cover the ventilation openings. Do not vacuum with any ventilation openings blocked; keep free of dust, lint, hair or anything that may reduce air flow.
- Keep hair, loose clothing, fingers, all parts of body away from openings and moving parts.
- If the supply cord is damaged, it must be replaced by the manufacturer, a qualified service agent or similarly qualified persons in order to avoid a hazard.
- This appliance can be used by children aged from 8 years and above and persons with reduced physical, sensory or mental capabilities or lack of experience and knowledge if they have been given supervision or instruction concerning use of the appliance in a safe way and understanding the hazards involved.
- Children shall not play with the appliance.
- Cleaning and user maintenance shall not be made by children without supervision.
- For additional protection: It is recommended that this vacuum cleaner can be used in conjunction with residual current device (RCD) with a rated residual current of 30mA or less.
- If foam or liquid escapes from the machine, switch off immediately.
- Check the float valve regularly to ensure it is moving freely and examine it for signs of damage.

When using as blower:

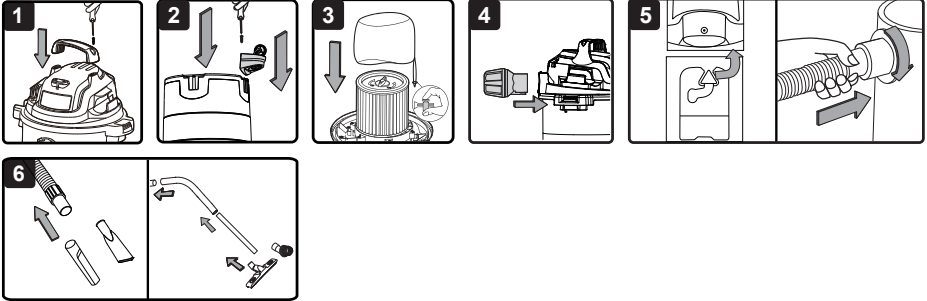
- Direct air discharge only at work area.
- Do not use the wet and dry vacuum cleaner as a sprayer.
- Do not direct air at bystanders.
- Keep children away when blowing.
- Wear safety goggles.

UNPACKING AND CHECKING CARTON CONTENTS



1	Carry Handle	13	Extension Wand (x2)
2	On/Off Switch	14	Car Nozzle
3	Power Head	15	Hard Floor Nozzle
4	Suction Port	16	Round Dust Brush
5	Container	17	Crevice Tool
6	Accessory Storage	18	Cartridge Filter (pre-installed)
7	Drain Cap	19	Filter Retainer (pre-installed)
8	Caster Foot	20	Nylon Pre-filter
9	Latch	21	Air/Noise Diffuser
10	Hose Storage	22	Foam Filter
11	Blower Port	23	Screw (x6)
12	Hose	24	Instruction Manual

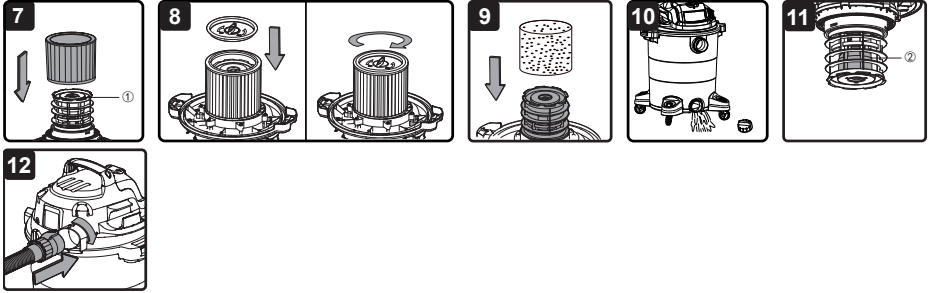
ASSEMBLY



NOTE: A Phillips screwdriver is required. 

1. Remove all the contents from inside of the vacuum cleaner container.
2. Attach the carry handle into the slots located on the top of the power head. Secure them with supplied screws (Fig. 1).
3. Turn the container upside down and insert the feet with casters into the slots and apply pressure until they click into place. Secure them with supplied screws (Fig. 2).
4. Your vacuum cleaner comes ready with the cartridge filter pre-installed. If the cartridge filter is not installed, refer to page 8.
5. Place the nylon pre-filter over the cartridge filter, making sure the whole filter is covered and secure the drawstring (Fig. 3).
6. For wet vacuuming, replace the cartridge filter and nylon pre-filter with the foam filter supplied. If the foam filter is not installed, refer to page 9.
7. Secure the power head back on the container using the 2 side latches.
8. For quiet operation, insert the air/noise diffuser into the blower port and lock into place (Fig. 4).
9. Insert the locking end of the hose into the suction port of the container (Fig. 5).
10. Choose the desired accessories and push fit onto the hose nozzle. The extension wands are necessary when the hard floor nozzle and the round dust brush are used (Fig. 6).

OPERATION



1. Switching On/Off

Connect the mains plug to a suitable power outlet.

Position	Status
I	on
O	off



2. Wet & Dry Vacuum Operation

⚠ WARNING! ENSURE YOU READ, UNDERSTAND AND APPLY SECTION ENTITLED 'SAFETY INFORMATION'.

- 1) Verify that the correct filters are installed for wet or dry vacuuming and the container latches are secured.
- 2) Secure the locking end of the suction hose into the vacuum suction port.
- 3) Push the desired accessories onto the hose nozzle.
- 4) Plug the power cord into a power outlet.
- 5) Turn on the motor by assigning the switch to the "I" ON position.
- 6) Once you have completed vacuuming, switch to the "O" OFF position and unplug the power cord from the power outlet.

NOTE: Empty the container, clean and dry the inside and outside after each use.

For Dry Vacuuming:

⚠ WARNING: BEFORE INSTALLING, REMOVING OR CLEANING THE VACUUM CLEANER FILTER, ENSURE THAT THE VACUUM CLEANER IS SWITCHED OFF AND UNPLUGGED.

- 1) To prepare your vacuum cleaner for dry vacuuming, install the cartridge filter over the filter cage (①) with the flat end of the filter towards the vacuum power head. Carefully push filter until it sits flush forming a tight seal (Fig. 7).
- 2) Place the filter retainer cap on top of cartridge filter over the raised lip and tighten the retainer lock clockwise to secure against the internal filter cage (Fig. 8).
- 3) Place the nylon pre-filter over the cartridge filter, making sure the whole filter is covered and secure the drawstring.

OPERATION

4) Replace the power head, and secure it in place.

IMPORTANT: Check the filters regularly for optimal performance. An old or blocked filter will reduce suction performance.

For Wet Vacuuming:

- 1) To prepare your vacuum cleaner for wet vacuuming, remove the dry use cartridge filter and nylon pre-filter.
- 2) Carefully install the supplied foam filter over the internal filter cage, making sure the whole cage is covered (Fig. 9).



WARNING: DO NOT USE THE CARTRIDGE FILTER AND NYLON PRE-FILTER FOR WET VACUUMING.

NOTE: After wet vacuuming, turn the machine off and remove plug from power supply; remove the drain cap and drain the liquid into a suitable receptacle or drain (Fig. 10). Remember to refit the container with the drain cap. Make sure the filters and container are dry and clean before dry vacuuming.

IMPORTANT! The vacuum cleaner is equipped with a float valve (②) which is operational during wet suction (Fig. 11). The suction power decreases when the maximum filling level is reached. When this happens, switch the vacuum cleaner off immediately, and empty the container.

3. Blower Operation



WARNING: KEEP BYSTANDERS CLEAR FROM BLOWING DEBRIS.



WARNING! WEAR A DUST MASK IF BLOWING CREATES DUST THAT MIGHT BE INHALED.

- 1) Make sure the container and any collected waste is emptied before using as a blower.
- 2) Remove the air/noise diffuser from the blower port.
- 3) Insert the locking end of the suction hose into the blower port on the rear of the power head (Fig. 12).
- 4) Turn on the motor on by turning the switch to the 'I' ON position.
- 5) Once you have completed blowing, switch to the "O" OFF position and unplug the power cord from the power outlet.

MAINTENANCE



WARNING: REMOVE THE POWER CORD FROM THE POWER SUPPLY BEFORE CARRYING OUT ANY MAINTENANCE.

- 1) Keep all safety devices, air vents and the motor housing free of dirt and dust. Use a soft, dry brush to clean the equipment regularly.
- 2) Clear all dirt or debris from the container after each use. Allow to dry before replacing the power head. Do not use cleaning agents or solvents; these may damage the appliance.
- 3) Check the hose, attachments, and power cord to verify that they have not been damaged or any debris is trapped and blocking airflow.

1. Cleaning Nylon Pre-filter and Cartridge Filter

Use a mild soap and water solution to wash the nylon pre-filter and rinse with clean water. Allow the filter to air dry before re-installing.

Remove the cartridge filter and clean by gently tapping or brushing off dirt. For optimal performance it is recommended to replace the old filter with a new filter regularly.

2. Cleaning Foam Filter

Remove the foam filter and use a mild soap and water solution to wash and rinse with clean water (Fig. 13). Allow the filter to air dry completely before storing or re-installing.

TROUBLESHOOTING



WARNING: TO REDUCE THE RISK OF ELECTRIC SHOCK, UNPLUG BEFORE TROUBLESHOOTING.

Cleaning Performance

Vacmaster vacuum cleaners are tested for endurance. If your motor is operating, then the most likely cause for a loss in suction is a blockage or an opening in the vacuum.

To maintain a high cleaning performance from your machine, it is important to replace or clean filters as necessary. A performance drop with clean filters can only be caused by a blockage in the tools or the hose.

PROBLEM	POSSIBLE CAUSE	SOLUTION
The appliance does not work.	No power.	Check the power supply and fuse.
	Functional fault in the power cord, switch, or motor.	Have the damaged part checked by qualified personnel or contact the after sales helpline.
Dust is escaping from the motor cover.	The filter is missing or damaged.	Install the filter correctly or replace it if it is damaged.
Low suction power and high operating noise / vibrations.	Suction nozzle, hose, or tank inlet is blocked.	Check the suction nozzle, hose, and tank inlet for obstructions.
	Cartridge filter or pre-filter is blocked.	Remove the cartridge filter or pre-filter and clean.
	Float valve has closed.	Empty the container of any liquid waste and ensure the float valve located underneath the filter is able to move freely.

TECHNICAL DATA

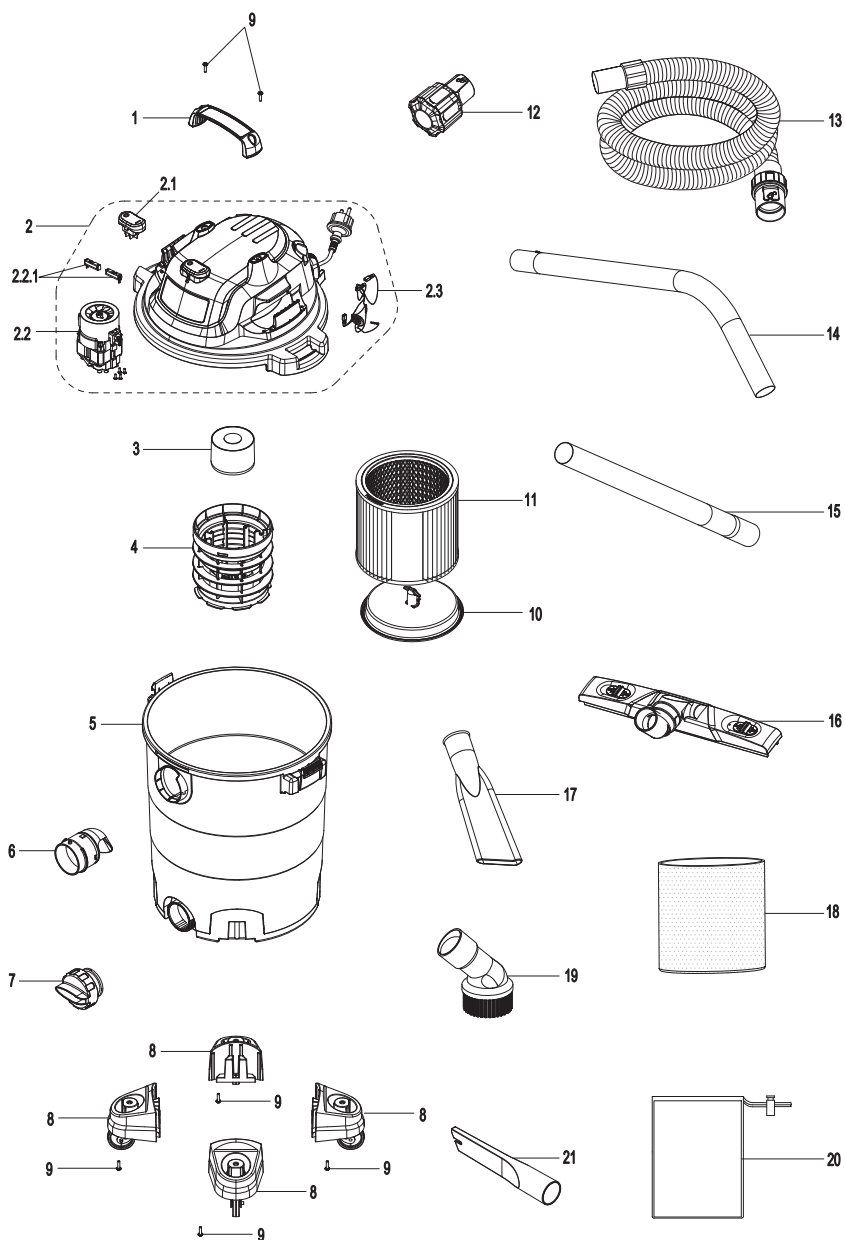
Model Number	VOC1230PF
Motor	220-240V~50Hz
Power Input	1200W
Tank Volume	30L
Net Weight	8kg

RECYCLING AND DISPOSAL



This marking indicates that this product should not be disposed with other household wastes. The machine must be delivered in rigid packaging to avoid damage during transportation. The packaging and the machine itself are manufactured from recyclable materials and should be disposed of accordingly.

EXPLODED VIEW



PARTS LIST

Part	Part Number	Description	Quantity
1	551434101	Carry Handle	1
2		Power Head Assembly	1
2.1	551328102	On/Off Switch	1
2.2	551125112	Motor	1
2.2.1	551046112	Carbon Brush Assembly	2
3	551005103	Float Valve	1
4	551005104	Filter Cage	1
5		Container	1
6	551011106	Suction Port	1
7	551002110	Drain Cap	1
8	551058121	Caster Foot	4
9	551017125	Screw	6
10	551437107	Filter Retainer	1
11	551018118	Cartridge Filter	1
12	551001152	Air/Noise Diffuser	1
13	551780102	Hose	1
14	551052113	Extension Wand (Bend)	1
15	551052114	Extension Wand (Straight)	1
16	551018116	Hard Floor Nozzle	1
17	551008129	Car Nozzle	1
18	551048109	Foam Filter	1
19	551008130	Round Dust Brush	1
20	551034122	Nylon Pre-filter	1
21	551001118	Crevice Tool	1

VOC1230PF

12, SHALIN BUNGLOWS, B/H KARMAJYOT BUNGLOWS,
NR.S.P RING ROAD, SHILAJ, AHMEDABAD,
GUJARAT, 380058